

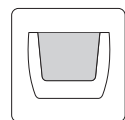
A modern outdoor courtyard with stone walls, large concrete planters, and greenery. The scene is brightly lit, suggesting a sunny day. The architecture features clean lines and a mix of materials, including stone and concrete. The plants are well-maintained and add a touch of nature to the urban setting.

# ETHICK

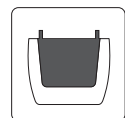
forms of decor

OFFER 2026 / 27

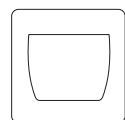
## legend



in-mold insert



removable insert with handles



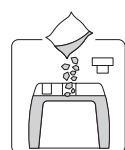
no insert



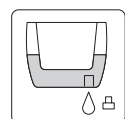
quantity in a primary packaging



quantity on a pallet



additional load



water drain plug



wheels available as an accessory



non-standard pallet - size:  
1200 x 1000 mm  
or 1200 x 1200 mm

## colour palette



440R pure white



101GR sand



102GR salt



231R macchiato



247R mocca



243R terracotta



220R red ochre



200GR rust



100GR corten steel



106GR concrete gray



466R anthracite



107GR graphite



109GR charcoal



108GR lead



105GR tiny granite



460GR granite



462GR granite graphite



463GR black granite



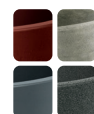
400R pure black



405U stone gray

## colour swatch list

p. 26 - 27



PL / Zdjęcia i wizualizacje produktów mają charakter poglądowy. Kolory, odcienie, struktura powierzchni oraz wykończenie detali mogą różnić się od rzeczywistych produktów w zależności od partii produkcyjnej, ustawień oświetlenia. Naturalne różnice w fakturze i tonacji są cechą charakterystyczną procesu produkcyjnego i nie stanowią wady wyrobu.

EN / Product photos and visualisations are for illustrative purposes only. Colours, shades, surface textures and finishing details may differ slightly from the actual products, depending on the production batch or lighting conditions. Natural variations in tone and texture are inherent characteristics of the manufacturing process and do not constitute a defect.

DE / Produktfotos und Visualisierungen dienen zur Veranschaulichung. Farben, Schattierungen, Oberflächenstrukturen und Details der Verarbeitung können je nach Produktionscharge oder Lichtverhältnissen leicht von den tatsächlichen Produkten abweichen. Natürliche Unterschiede in Struktur und Farbton sind charakteristische Merkmale des Herstellungsprozesses und stellen keinen Mangel dar.

# INDEX



**NEW size**  
**ULPHO**

p. 2



**LATIA**

p. 5



**DUALA**

p. 10



**EVOLIA**

p. 16



**FERRO**

p. 18



**LEXO**

p. 24



**EPOCCO**

p. 3



**TUBRA**

p. 6



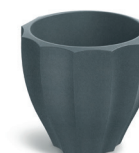
**GANE**

p. 11



**NEW size**  
**YEKE**

p. 16



**RONA**

p. 19



**SIMPLA**

p. 25



**BOGE**

p. 4



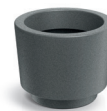
**NEW**  
**BLUMIO**

p. 7



**NEW size**  
**VEMO**

p. 12



**SPLITO**

p. 17



**NEW size**  
**CUBLA**

p. 20



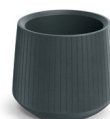
**FOLKA**

p. 4



**NEW size**  
**MOLTA**

p. 7



**CORO**

p. 13



**ARIA**

p. 17



**GENECA**

p. 22



**DEFORA**

p. 5



**NEW**  
**MOLIO**

p. 10



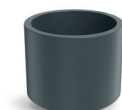
**MOODA**

p. 16



**CANO**

p. 17



**TUBLA**

p. 23

# ULPHO collection

Some flowerpot models are fitted with a removable insert with integrated handles. The ULPHO High model features an integrated in-mould insert.



## ULPHO

	mm	mm	mm	pcs	pcs	
TUO40	400	300	-10	3	36	

243R 101GR

109GR



## ULPHO midl

	mm	mm	mm	pcs	pcs	
TUO40M	400	450	-10	2	24	
TUO48M	480	600	-20	1	9	
TUO60M	600	850	-31	1	8	!

243R 101GR

109GR



## NEW size ULPHO bowl

	mm	mm	mm	pcs	pcs	
TUO48B	480	220	-30	2	24	
TUO60B	580	270	-46	1	28	!
TUO80B	800	370	-122	1	5	

243R 101GR

109GR



## ULPHO high

	mm	mm	mm	pcs	pcs	
TU30H	300	600	-8	1	33	

243R 101GR

109GR

# EPOCCO collection

These models are available with an integrated in-mould insert.

ETHICK




**EPOCCO bold**

	mm	mm	pcs	pcs
TEP48B	480	600	~14	1 12

101GR

231R

107GR

220R






**EPOCCO midl**

	mm	mm	pcs	pcs
TEP38M	380	700	~8	1 15


101GR

231R

107GR

220R






**EPOCCO tall**


	mm	mm	pcs	pcs
TEP30T	300	900	~3	1 22

101GR

231R

107GR

220R






**EPOCCO high**

	mm	mm	pcs	pcs
TEP46H	460	1000	~14	1 6

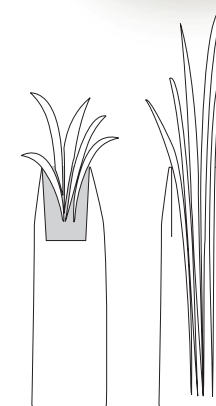
101GR

231R

107GR

220R











The bottom of the integrated insert can be manually cut to allow deeper placement of tall plants. The modification should be performed by the user with appropriate tools, based on individual requirements.

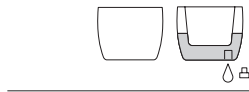
Zdjęcia produktów mają charakter poglądowy. Niewielkie różnice w kolorze, strukturze lub wykończeniu wynikają z procesu produkcyjnego. Product images are for illustrative purposes only. Minor variations in colour, texture, or finish may occur as a result of the production process. Produktbilder dienen nur zur Veranschaulichung. Geringfügige Abweichungen in Farbe, Struktur oder Oberfläche können produktionsbedingt auftreten.

# BOGE collection



## BOGE

						
	mm	mm	pcs	pcs		
TBO40	380	400	~37	2	24	
TBO48	460	470	~58	1	16	









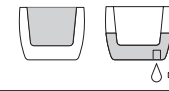
# FOLKA collection

These models are available with an integrated in-mould insert.









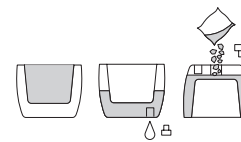
## FOLKA round

						
	mm	mm	pcs	pcs		
TFOR40	400	320	~12	2	36	
TFOR48	480	400	~34	1	15	
TFOR60	580	540	~60	1	12 (!)	










## FOLKA round high

						
	mm	mm	pcs	pcs		
TFOR30H	300	620	~12	1	33	
TFOR40H	400	900	~24	1	12	









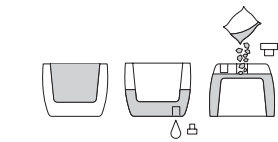
## FOLKA round case

							
	mm	mm	mm	mm	pcs	pcs	
TFOC60	580	340	460	~34	1	16	
TFOC80	780	380	560	~58	1	9	



## FOLKA round midl

						
	mm	mm	mm	pcs	pcs	
TFOR40M	400	570	~23	1	18	



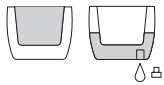
# DEFORA collection

These planters are available in two versions: with an integrated in-mould insert or without an insert.



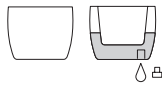
## DEFORA

	∅	↑	📄	📦	📦
	mm	mm		pcs	pcs
TDE40	400	400	-14	2	48
TDE48	470	480	-26	2	24
TDE60	600	610	-53	1	20 (!)
TDE80	780	720	-127	1	4



## DEFORA

	∅	↑	📄	📦	📦
	mm	mm		pcs	pcs
TDEO40	400	400	-28	2	60
TDEO48	470	480	-54	2	24
TDEO60	600	610	-106	1	32 (!)
TDEO80	780	720	-222	1	4

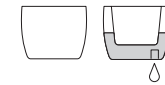


# LATIA collection



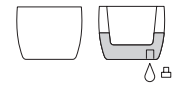
## LATIA round

	∅	↑	📄	📦	📦
	mm	mm		pcs	pcs
TLRO30	300	250	-11	5	220
TLRO40	400	330	-27	5	90



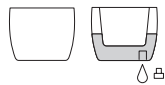
## LATIA round mid

	∅	↑	📄	📦	📦
	mm	mm		pcs	pcs
TLRO40M	400	400	-32	5	90
TLRO48M	480	480	-56	3	27
TLRO60M	600	580	-105	3	36 (!)



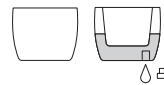
## LATIA round high

	∅	↑	📄	📦	📦
	mm	mm		pcs	pcs
TLRO40H	400	580	-47	4	48



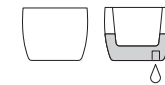
## LATIA square mid

	↔	↗	↑	📄	📦	📦
	mm	mm	mm		pcs	pcs
TLSO30M	300	300	300	-17	5	240 (!)
TLSO40M	400	400	400	-39	5	90
TLSO48M	480	480	480	-69	3	48 (!)
TLSO60M	600	600	580	-130	3	36 (!)



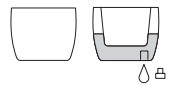
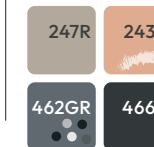
## LATIA square high

	↔	↗	↑	📄	📦	📦
	mm	mm	mm		pcs	pcs
TLSO40H	400	400	580	-59	3	54



## LATIA oval

	↔	↗	↑	📄	📦	📦
	mm	mm	mm		pcs	pcs
TLO58	580	240	200	-14	4	96



# TUBRA collection

Selected planter models feature an integrated (in-mold) insert moulded as part of the body, four slim models are supplied with a removable insert, while the remaining designs are available without an insert.



## TUBRA round

	Ø	↑	↓	□	■
	mm	mm	mm	pcs	pcs
TTO40*	400	340	~22	3	72
TTO48*	480	380	~41	2	30
TTO60*	600	700	~120	1	24 !
TTO80	800	900	~252	1	4

101GR	460GR	463GR
-------	-------	-------

\* No plug



## TUBRA round midl

	Ø	↑	↓	□	■
	mm	mm	mm	pcs	pcs
TTO48M	480	600	~64	2	24

101GR	460GR	463GR
-------	-------	-------



## TUBRA round

	Ø	↑	↓	□	■
	mm	mm	mm	pcs	pcs
TT60*	600	700	~58	1	16 !
TT80	800	900	~111	1	2

101GR	460GR	463GR
-------	-------	-------

\* No plug



## TUBRA round slim

	Ø	↑	↓	□	■
	mm	mm	mm	pcs	pcs
TTS48	480	1050	~33	1	6
TTS60	600	1000	~62	1	8 !

101GR	460GR	463GR
-------	-------	-------



## TUBRA round slim high

	Ø	↑	↓	□	■
	mm	mm	mm	pcs	pcs
TTS40H	400	1100	~18	1	12
TTS48H	480	1350	~33	1	4

101GR	460GR	463GR
-------	-------	-------



## TUBRA round slim

	Ø	↑	↓	□	■
	mm	mm	mm	pcs	pcs
TTSO48	480	1050	~31	1	12
TTSO60	600	1000	~56	1	12 !

101GR	460GR	463GR
-------	-------	-------



## TUBRA round slim high

	Ø	↑	↓	□	■
	mm	mm	mm	pcs	pcs
TTSO40H	400	1100	~20	1	18
TTSO48H	480	1350	~31	1	6

101GR	460GR	463GR
-------	-------	-------



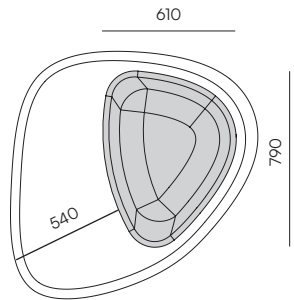
# BLUMIO collection

These models are available with an integrated in-mould insert.



**NEW**  
**BLUMIO**

	mm	mm	mm	pcs	pcs
TBL120	1200	1200	380	~77	4 !



# MOLTA collection

These planters are available in two versions: with an integrated in-mould insert or without an insert.



**NEW** size  
**MOLTA round**

	mm	mm	mm	pcs	pcs
TMRO40	400	300	~25	2	36
TMRO48	480	350	~47	2	18
TMRO60	600	420	~92	2	16 !
TMRO80	780	560	~170	1	8
TMRO100	970	800	~410	1	2 !
TMRO115	1150	860	~617	1	2 !



**NEW** size  
**MOLTA round high**

	mm	mm	mm	pcs	pcs
TMRO40H	400	400	~37	2	24
TMRO48H	480	480	~69	2	12
TMRO60H	600	550	~123	1	12 !
TMRO80H	780	730	~244	1	2



**NEW**  
**MOLTA round low**

	mm	mm	mm	pcs	pcs
TMRO115L	1150	550	~320	1	3 !



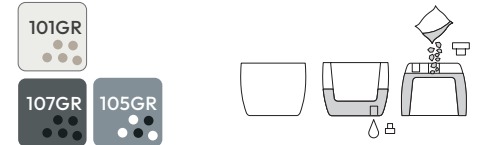
**NEW**  
**MOLTA round slim**

	mm	mm	mm	pcs	pcs
TMRSO40	390	500	~40	1	24
TMRSO48	480	600	~79	1	12
TMRSO60	580	780	~165	1	8 !



**NEW**  
**MOLTA round slim high**

	mm	mm	mm	pcs	pcs
TMRSO48H	480	870	~124	1	8
TMRSO60H	580	1200	~272	1	6 !



# MOLTA collection



**NEW** size

## MOLTA round high

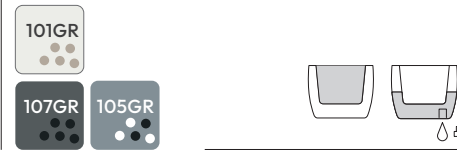
	∅ mm	↑ mm	↓ mm	📄 pcs	📦 pcs
TMR40H	400	400	~19	2	24
TMR48H	480	480	~35	2	12
TMR60H	600	550	~64	1	12 (!)
TMR80H	780	730	~145	1	2



**NEW**

## MOLTA round slim

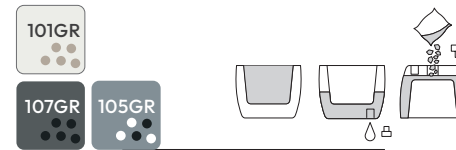
	∅ mm	↑ mm	↓ mm	📄 pcs	📦 pcs
TMR560	580	780	~70	1	8 (!)



**NEW**

## MOLTA round slim high

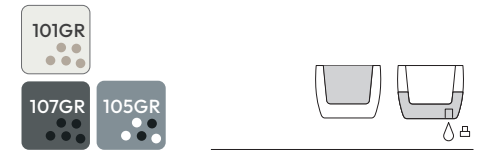
	∅ mm	↑ mm	↓ mm	📄 pcs	📦 pcs
TMR548H	480	870	~39	1	8
TMR560H	580	1200	~70	1	6 (!)



**NEW**

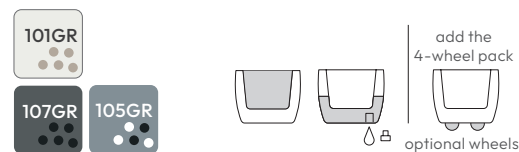
## MOLTA round

	∅ mm	↑ mm	↓ mm	📄 pcs	📦 pcs
TMR100	970	800	~264	1	2 (!)
TMR115	1150	860	~414	1	2 (!)



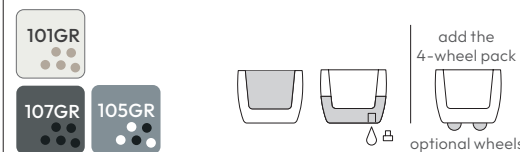
## MOLTA case

	← mm	↗ mm	↑ mm	📄 pcs	📦 pcs
TMC80	800	380	370	~57	1



## MOLTA square

	← mm	↗ mm	↑ mm	📄 pcs	📦 pcs
TMS40	400	400	380	~23	1
TMS48	480	480	450	~42	1



## MOLTA square foot

	← mm	↗ mm	↑ mm	📄 pcs	📦 pcs
TMSF40	400	400	360	~19	3
TMSF48	480	480	390	~32	2



## MOLTA round foot

	∅ mm	↑ mm	↓ mm	📄 pcs	📦 pcs
TMRF40	400	330	~15	1	42
TMRF48	480	420	~30	1	15
TMRF60	600	500	~55	1	16 (!)



Accessories Recommended: set of wheels for flower pots (p. -)

# MOLTA collection



**MOLTA base square**

	mm	mm	mm	pcs	pcs	pcs
<b>TMBS40</b>	400	440	-17	-2	24	



**MOLTA base round**

	mm	mm	mm	pcs	pcs	pcs
<b>TMBR40</b>	400	330	-13	2	48	



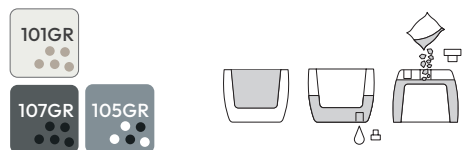
**MOLTA base round midl**

	mm	mm	mm	pcs	pcs	pcs
<b>TMBR40M</b>	400	510	-17	1	30	



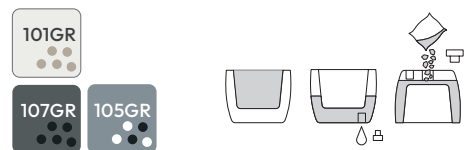
**MOLTA vessel**

	mm	mm	mm	pcs	pcs	pcs
<b>TMV40</b>	400	500	-12	1	30	



**MOLTA grail**

	mm	mm	mm	pcs	pcs	pcs
<b>TMG40</b>	400	430	-14	1	42	



**MOLTA grail midl**

	mm	mm	mm	pcs	pcs	pcs
<b>TMG40M</b>	400	540	-19	1	30	



**NEW**

**MOLTA grail slim**

	mm	mm	mm	pcs	pcs	pcs
<b>TMGS25</b>	250	610	-6	1	42	
<b>TMGS30</b>	300	760	-10	1	22	

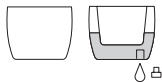


# MOLIO collection



## MOLIO round

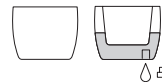
	Ø mm	↑ mm	↓ mm	📄 pcs	📄 pcs
TMOO40	380	320	~23	2	60
TMOO48	470	400	~44	2	24
TMOO60	580	500	~86	1	24 !
TMOO80	780	640	~102	1	5



NEW

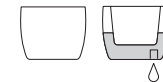
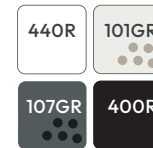
## MOLIO round slim

	Ø mm	↑ mm	↓ mm	📄 pcs	📄 pcs
TMOS40	390	960	~88	1	12
TMOS48	470	1150	~152	1	4
TMOS60	580	1350	~268	1	4 !



## MOLIO bowl

	Ø mm	↑ mm	↓ mm	📄 pcs	📄 pcs
TMBO40	380	165	~12	3	108
TMBO60	600	250	~44	2	24
TMBO80	780	340	~107	1	10



# DUALA collection

These models are available with an integrated in-mould insert.



## DUALA round

	Ø mm	↑ mm	↓ mm	📄 pcs	📄 pcs
TDR30	300/250	410	~6/4	1	55
TDR40	400/300	480	~17/12	1	24
TDR48	470/360	550	~23/13	1	12
TDR60	580/445	680	~44/24	1	12 !



## DUALA round mid

	Ø mm	↑ mm	↓ mm	📄 pcs	📄 pcs
TDR40M	400/350	610	~17/12	1	18



## DUALA round slim

	Ø mm	↑ mm	↓ mm	📄 pcs	📄 pcs
TDS30	300/250	540	~8/5	1	44
TDS40	400/300	700	~17/12	1	18

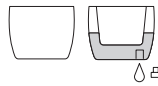


# GANE collection



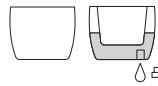
## GANE

	mm	mm		pcs	pcs
TGAO26	260	205	~6	3	144



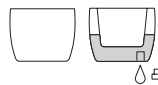
## GANE

	mm	mm		pcs	pcs
TGAO30	300	215	~7	3	150



## GANE set

	mm	mm		pcs	pcs
TGAO1S	300	270	~6/7	1	80



# VEMO collection

These planters are available in two versions: with an integrated in-mould insert or without an insert.



**NEW**

## VEMO round

	mm	mm		pcs	pcs	
TVO60	580	450	~74	1	20	!
TVO75	750	590	~142	1	3	
TVO100	970	670	~305	1	3	!
TVO115	1150	730	~440	1	3	!

44OR	101GR
107GR	105GR



**NEW**

## VEMO round midl

	mm	mm		pcs	pcs	
TVO40M	400	440	~34	1	30	
TVO48M	480	520	~59	1	12	
TVO60M	580	660	~116	1	12	!
TVO75M	750	880	~255	1	2	

44OR	101GR
107GR	105GR



**NEW**

## VEMO round high

	mm	mm		pcs	pcs	
TVO40H	400	600	~52	1	18	
TVO48H	480	700	~87	1	9	
TVO60H	580	890	~172	1	8	!
TVO75H	750	1200	~385	1	1	

44OR	101GR
107GR	105GR



**NEW**

## VEMO round slim

	mm	mm		pcs	pcs	
TVSO40	400	870	~81	1	12	
TVSO60	580	1200	~245	1	6	!

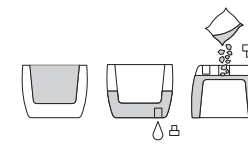
44OR	101GR
107GR	105GR



## VEMO round

	mm	mm		pcs	pcs	
TV40	400	260	~12	3	54	

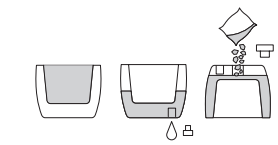
44OR	101GR
107GR	105GR



## VEMO round midl

	mm	mm		pcs	pcs	
TV40M	400	400	~16	2	30	

44OR	101GR
107GR	105GR



# CORO collection

These models are available with an integrated in-mould insert.



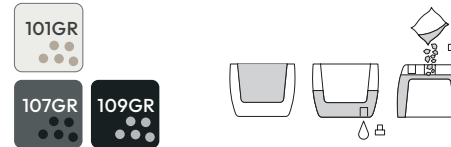
## CORO round

	∅	↑	↓	📄	📦
	mm	mm	mm	pcs	pcs
TCR30	300	300	-9	2	66
TCR40	400	360	-19	1	30
TCR48	480	450	-34	1	12



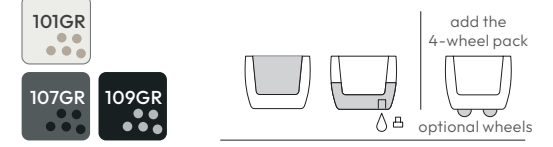
## CORO round high

	∅	↑	↓	📄	📦
	mm	mm	mm	pcs	pcs
TCR40H	400	700	-22	1	12
TCR48H	480	800	-34	1	6



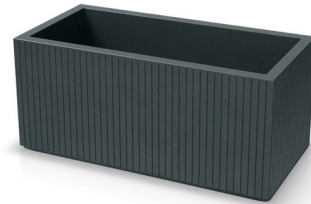
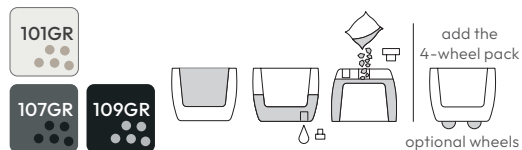
## CORO square

	↔	↗	↑	📄	📦
	mm	mm	mm	pcs	pcs
TCS40	400	400	360	-24	1 30
TCS48	480	480	440	-47	1 16 !



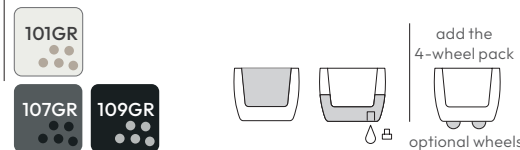
## CORO square high

	↔	↗	↑	📄	📦
	mm	mm	mm	pcs	pcs
TCS40H	400	400	700	-27	1 15



## CORO case

	↔	↗	↑	📄	📦
	mm	mm	mm	pcs	pcs
TCC80	800	380	360	-58	1 15



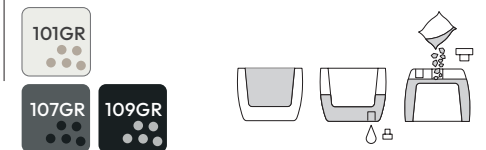
## CORO bowl

	∅	↑	↓	📄	📦
	mm	mm	mm	pcs	pcs
TCB40	400	200	-6	3	54
TCB48	480	420	-22	2	12



## CORO bowl high

	∅	↑	↓	📄	📦
	mm	mm	mm	pcs	pcs
TCB40H	400	530	-9	1	18



Accessories Recommended: set of wheels for flower pots (p. 20)





# ETHICK

Welcome to the inspiring world of possibilities offered by ETHICK.  
Explore the delightful and diverse forms of pots for your home and garden.



# MOODA collection

These models are available with an integrated in-mould insert.



## MOODA square

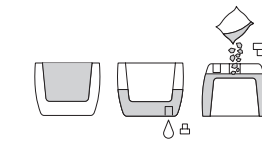
	mm	mm	mm	pcs	pcs
TM40	400	400	650	~22	1 24
TM60*	600	600	1000	~64	1 8 !
TM70*	700	700	1200	~114	1 2



\* No plug

## MOODA square high

	mm	mm	mm	pcs	pcs
TM40H	400	400	1000	~22	1 12



# YEKE collection

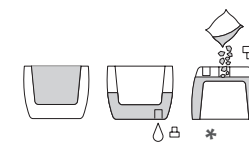
These models are available with an integrated in-mould insert.



NEW size

## YEKE

	mm	mm	mm	pcs	pcs
TY40	400	300	200	~5	3 72
TY50	500	400	250	~8	2 32
TY55*	550	400	250	~10	1 28
TY80*	800	580	300	~30	1 12
TY58*	570	530	255	~8	1 24 !
TY78*	770	460	280	~10	1 12



\* No plug

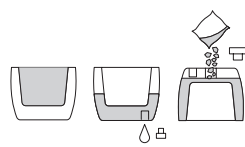
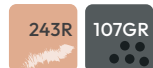
# EVOLIA collection

These models are available with an integrated in-mould insert.



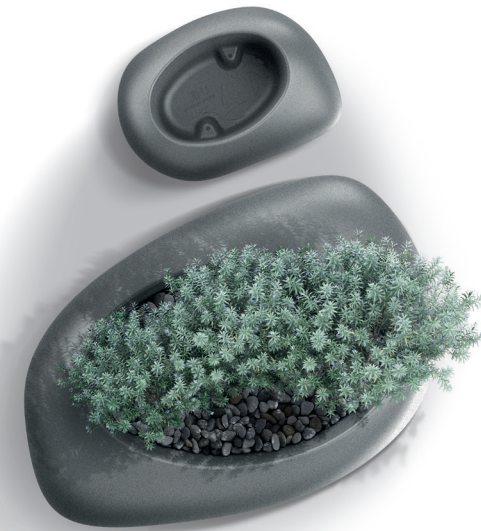
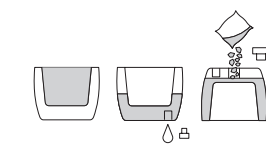
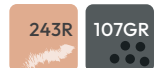
## EVOLIA

	mm	mm	mm	pcs	pcs
TEV60	600	500	380	~23	1 20 !

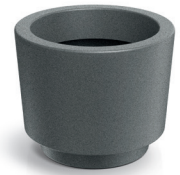


## EVOLIA slim

	mm	mm	pcs	pcs
TEVS40	400	500	~5	2 24



# SPLITO collection



## SPLITO round

	∅ mm	↑ mm	↓ mm	📄 pcs	📄 pcs
TSRO30	300	240	~11	2	88
TSRO40	400	305	~25	2	36

101GR  
107GR 105GR

# ARIA collection



## ARIA oval

	← mm	↗ mm	↑ mm	📄 pcs	📄 pcs
TAO40	400	200	160	~5	4 288
TAO60	600	280	200	~16	5 90

101GR  
107GR 105GR

# CANO collection

These models are available with an integrated in-mould insert.



## CANO

	∅ mm	↑ mm	↓ mm	📄 pcs	📄 pcs
TCA40	400	360	~16	2	48
TCA60	600	540	~54	2	16 !
TCA80	800	740	~134	1	3
TCA100	1050	1000	~303	1	2 !

101GR 243R  
106GR 107GR 109GR



## CANO high

	∅ mm	↑ mm	↓ mm	📄 pcs	📄 pcs
TCA40H	400	540	~13	1	18







101GR 243R  
106GR 107GR 109GR

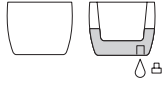


# FERO collection









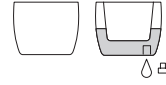
## FERO round

						
	mm	mm	mm	mm	pcs	pcs
TFRO30	300	240	~10	5	220	
TFRO40	400	310	~24	4	72	
TFRO48	480	380	~42	3	27	









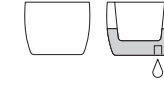
## FERO round midl

						
	mm	mm	mm	mm	pcs	pcs
TFRO30M	300	320	~14	4	132	
TFRO40M	400	420	~32	5	60	
TFRO48M	480	500	~56	2	24	





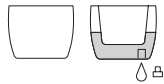
## FERO round high

						
	mm	mm	mm	mm	pcs	pcs
TFRO35H	350	500	~30	3	54	
TFRO40H	400	580	~45	2	36	



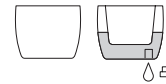
## FERO square

							
	mm	mm	mm	mm	mm	pcs	pcs
TFSO40	400	400	400	~43	4	72	
TFSO48	480	480	480	~73	2	40	!



## FERO square high

							
	mm	mm	mm	mm	mm	pcs	pcs
TFSO40H	400	400	580	~60	3	54	









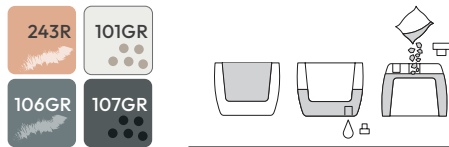
# RONA collection

These planters are available in two versions: with an integrated in-mould insert or without an insert.









### RONA round

						
	mm	mm		pcs	pcs	
TR40	400	360	~11	2	36	
TR60	600	540	~38	1	16 !	
TR80	800	720	~91	1	3	









### RONA round

						
	mm	mm		pcs	pcs	
TRO40	400	360	~17	2	48	
TRO60	600	540	~68	1	20 !	
TRO80	800	720	~165	1	4	









### RONA line

						
	mm	mm		pcs	pcs	
TRL30	280	300	~7	2	72	
TRL40	380	370	~15	1	30	
TRL60	580	480	~44	1	16 !	



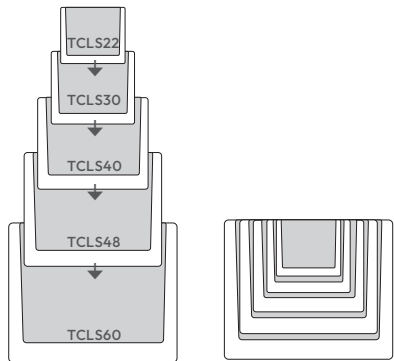
### RONA line high

						
	mm	mm		pcs	pcs	
TRL30H	280	470	~8	1	48	



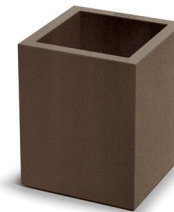
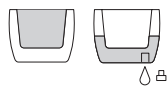
# CUBLA collection

These models are available with an integrated in-mould insert.



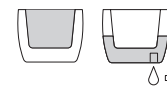
## CUBLA square

	← mm	↗ mm	↑ mm	📄 pcs	📦 pcs
TCLS22	220	220	200	~4	2 225 !
TCLS30	290	290	260	~13	1 112 !
TCLS40	380	380	320	~25	1 30
TCLS48	470	470	400	~51	1 16 !
TCLS60	580	580	450	~91	1 16 !



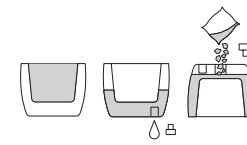
## CUBLA square midl

	← mm	↗ mm	↑ mm	📄 pcs	📦 pcs
TCLS30M	290	290	360	~11	1 80 !



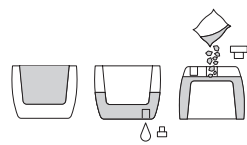
## CUBLA square slim

	← mm	↗ mm	↑ mm	📄 pcs	📦 pcs
TCLSS30	290	290	780	~14	1 32 !



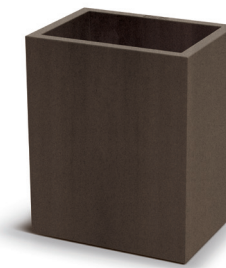
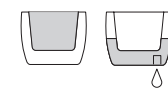
## CUBLA square high

	← mm	↗ mm	↑ mm	📄 pcs	📦 pcs
TCLS30H	290	290	580	~13	1 48 !



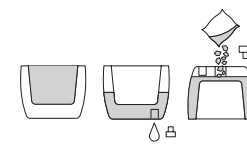
## CUBLA case

	← mm	↗ mm	↑ mm	📄 pcs	📦 pcs
TCLC60	580	260	260	~21	1 42
TCLC80	780	290	300	~35	1 24
TCLC100	980	380	360	~71	1 15 !



## CUBLA case high

	← mm	↗ mm	↑ mm	📄 pcs	📦 pcs
TCLC38H	360	260	450	~13	1 36
TCLC60H	580	260	580	~26	1 18

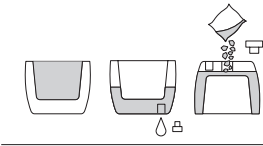


NEW



CUBLA case slim

	mm	mm	mm		pcs	pcs
TCLCS60	600	200	595	-15	1	24
TCLCS80	800	200	595	-20	1	18

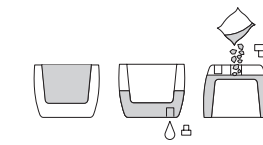


NEW



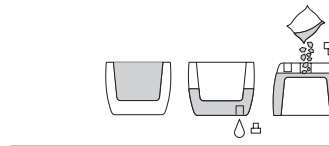
CUBLA case slim high

	mm	mm	mm		pcs	pcs
TCLCS80H	800	200	785	-25	1	12
TCLCS100H	1000	200	785	-32	1	12



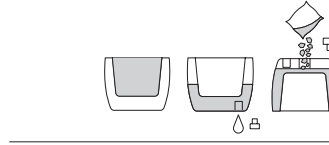
CUBLA dua

	mm	mm	mm		pcs	pcs
TCLD40	380	380	530	-16	2	24
TCLD60	580	380	530	-26	2	16



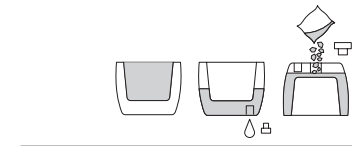
CUBLA stepa quatro

	mm	mm	mm		pcs	pcs
TCLQ40	380	380	530	-12	2	24



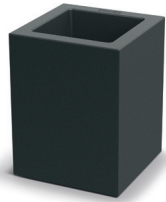
CUBLA stepa tria

	mm	mm	mm		pcs	pcs
TCLT60	580	240	560	-12	2	30



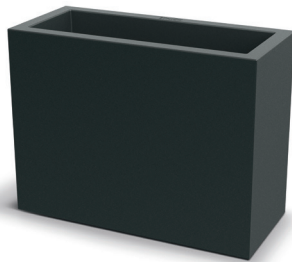
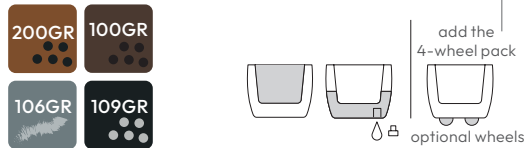
# GENECA collection

These models are available with an integrated in-mould insert.



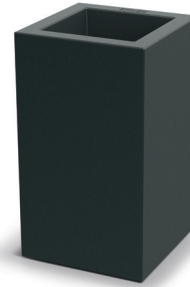
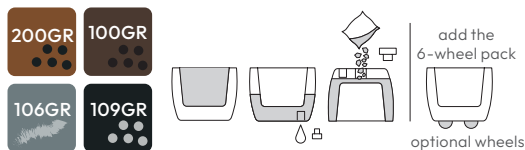
## GENECA square

	mm	mm	mm	pcs	pcs
TGS30	290	290	450	~9	2 64 (!)
TGS35	340	340	450	~13	2 30 (!)
TGS40	380	380	450	~20	2 24
TGS60	580	580	450	~84	1 16 (!)



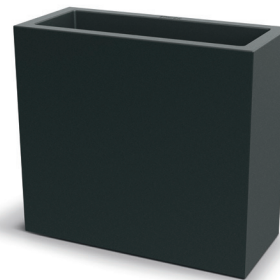
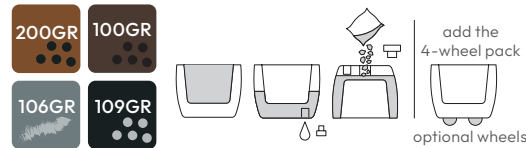
## GENECA case midl

	mm	mm	mm	pcs	pcs
TGC80M	780	340	600	~45	1 9
TGC100M	930	340	600	~58	1 9 (!)



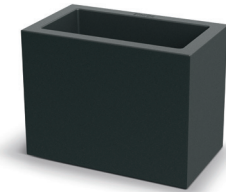
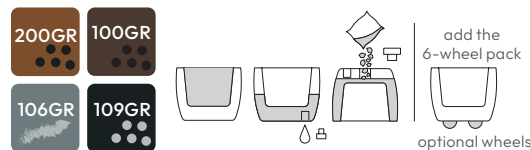
## GENECA square midl

	mm	mm	mm	pcs	pcs
TGS35M	340	340	600	~16	1 25 (!)



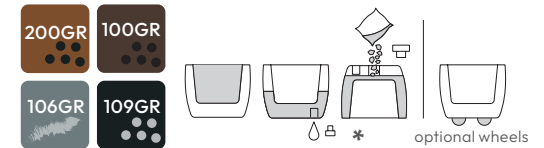
## GENECA case high

	mm	mm	mm	pcs	pcs
TGC80H	780	340	700	~52	1 7



## GENECA case

	mm	mm	mm	pcs	pcs
TGC60*	580	340	450	~26	1 20 (!)
TGC80	780	340	450	~38	1 12



\* No plug  
TGC60 - 4-wheel pack  
TGC80 - 6-wheel pack



## SET 4 / 6 wheels

	mm	mm	mm	pcs	pcs
TSW4	235	35	280	38	912
TSW6	235	35	425	18	432









# TUBLA collection

These models are available with an integrated in-mould insert.



### TUBLA round

						
	mm	mm	mm	mm	pcs	pcs
TTL30	290	260	-8	1	77	
TTL40	380	320	-19	1	30	
TTL48	470	400	-40	1	12	
TTL60	580	450	-71	1	16	!

200GR

100GR






106GR

109GR





### TUBLA round mid

						
	mm	mm	mm	mm	pcs	pcs
TTL30M	290	360	-9	1	55	

200GR

100GR







106GR

109GR





### TUBLA round high

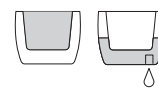
						
	mm	mm	mm	mm	pcs	pcs
TTL30H	290	530	-8	1	33	
TTL40H	380	580	-19	1	18	
TTL48H	470	600	-37	1	9	

200GR

100GR


106GR

109GR





### TUBLA stepa


							
	mm	mm	mm	mm	mm	pcs	pcs
TTLS80	800	300	560	-21	2	18	

200GR

100GR



106GR

109GR





### TUBLA tria

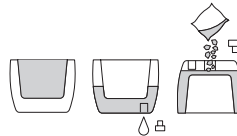
							
	mm	mm	mm	mm	mm	pcs	pcs
TTLT80	800	300	560	-21	1	15	

200GR

100GR

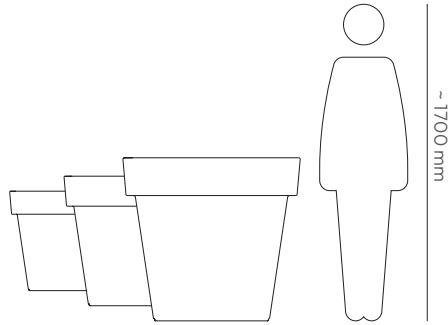
106GR

109GR











# LEXO collection



## LEXO round

						
	mm	mm		pcs	pcs	
DLR600	600	550	~90	1	20	
DLR800	800	750	~210	1	7	
DLR1000	1000	920	~430	1	5	!

440R

405U

466R









# SIMPLA collection



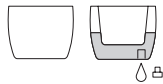
**NEW**

## SIMPLA round midl

						
	mm	mm	mm	mm	pcs	pcs
TSIO30M	300	250	~6	3	297	
TSIO35M	350	290	~9	3	216	!
TSIO40M	400	320	~15	3	126	
TSIO48M	480	390	~26	2	48	
TSIO60M	600	490	~55	1	44	!
TSIO80M	780	650	~130	1	7	
TSIO100M	980	820	~265	1	5	!
TSIO120M	1170	980	~455	1	4	!







440R

400R



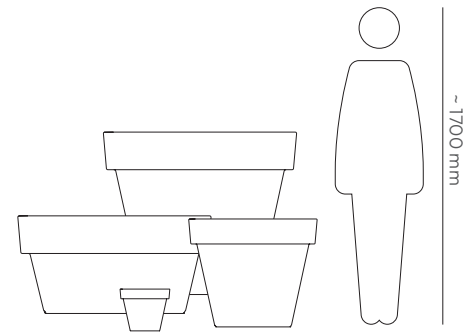
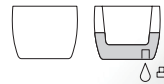
**NEW**

## SIMPLA round

						
	mm	mm	mm	mm	pcs	pcs
TSIO80	780	400	~92	1	11	
TSIO120	1170	510	~260	1	7	!

440R

400R



colour swatch list



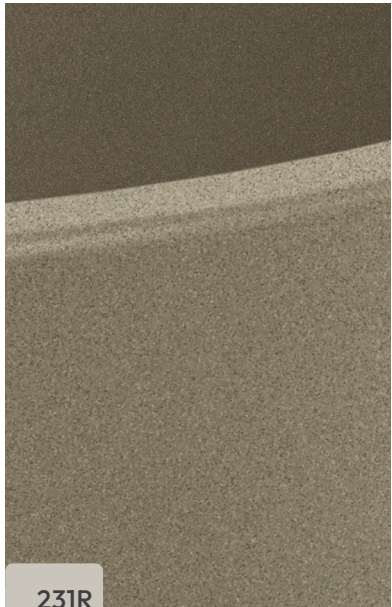
440R  
pure white



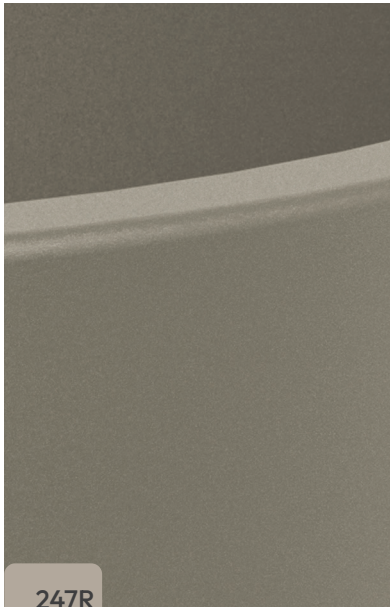
101GR  
sand



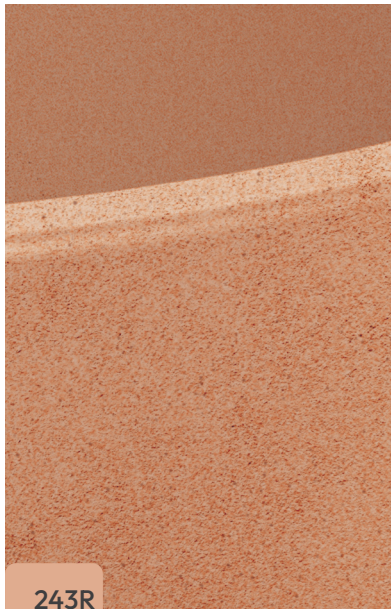
102GR  
salt



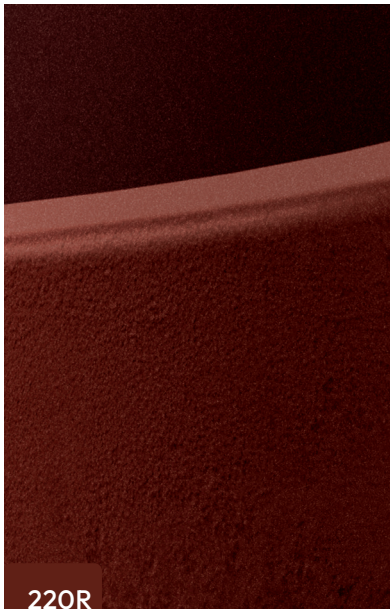
231R  
macchiato



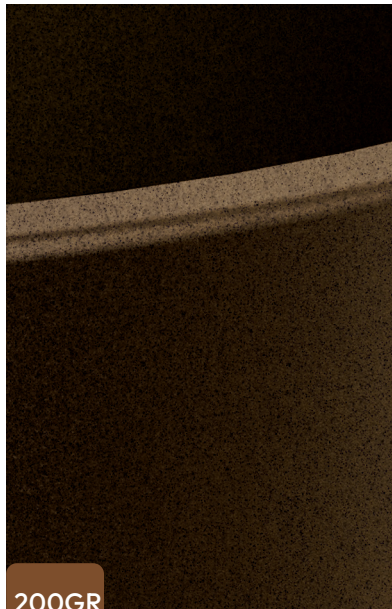
247R  
mocca



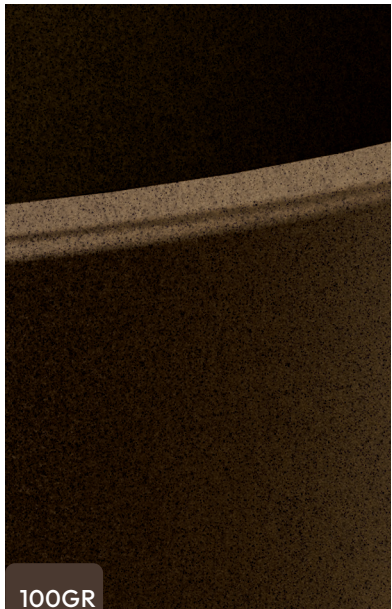
243R  
terracotta



220R  
red ochre



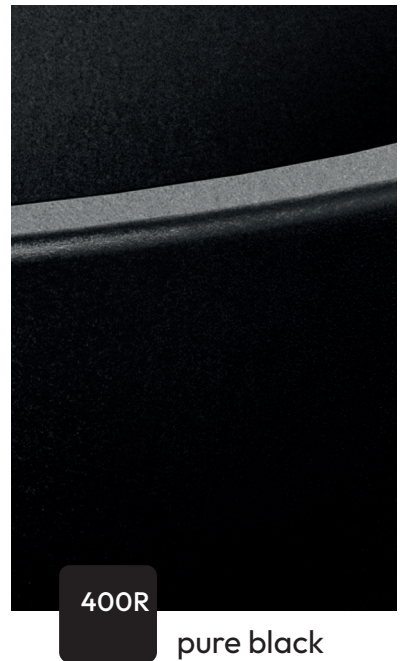
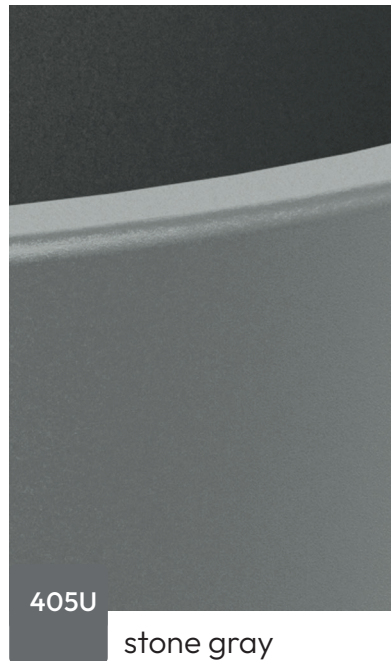
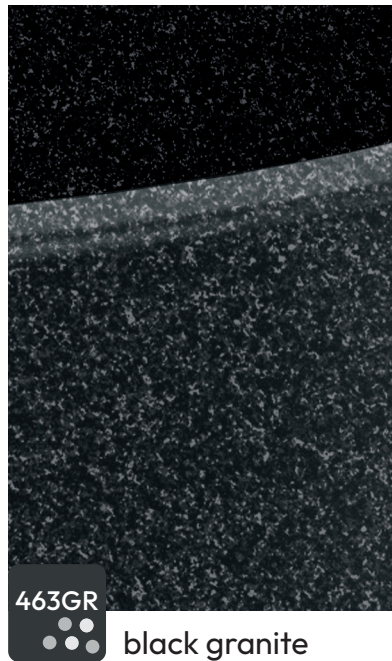
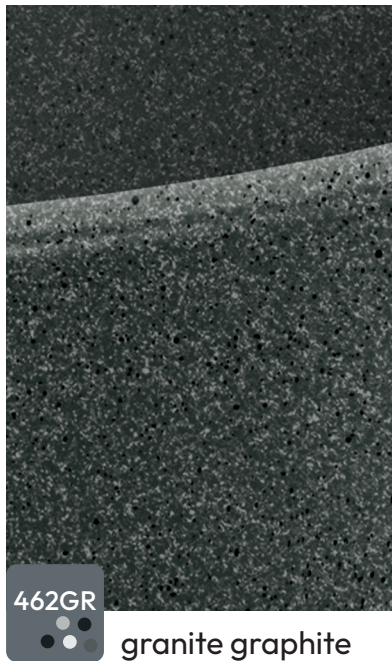
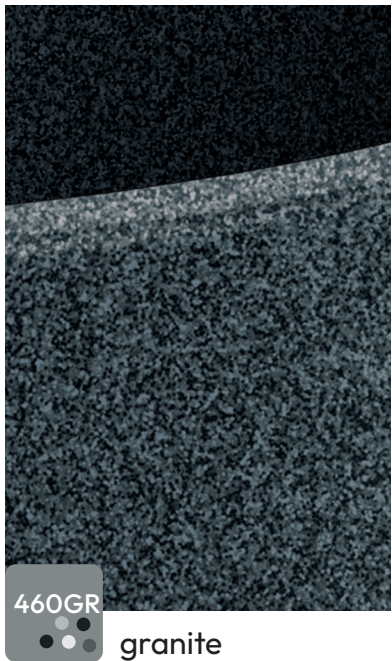
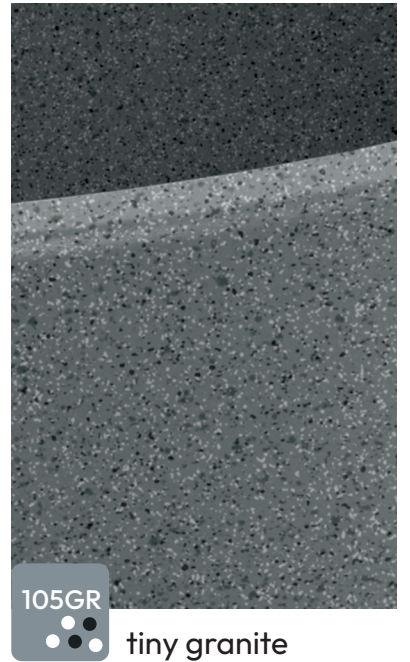
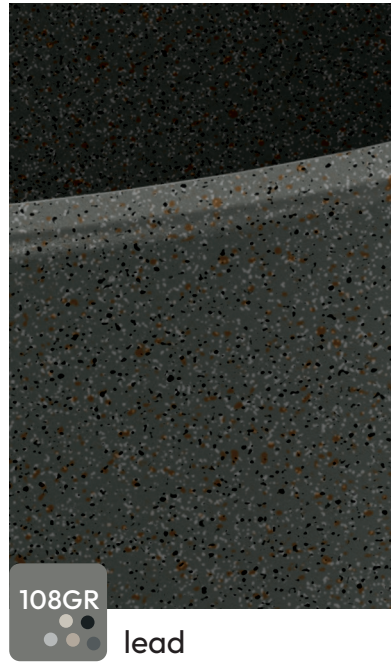
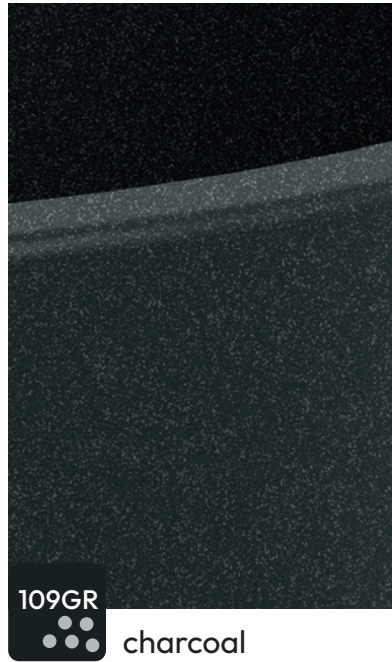
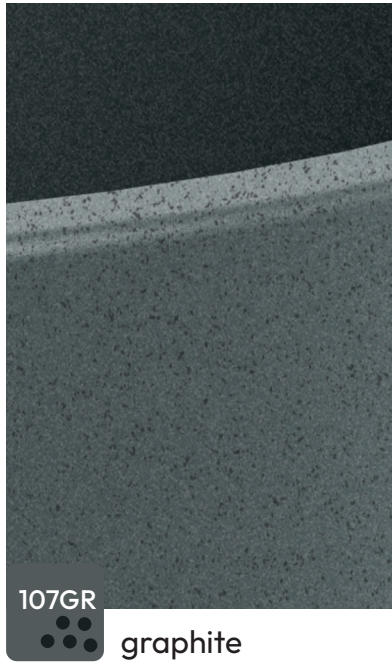
200GR  
rust



100GR  
corten steel



106GR  
concrete gray





**FOLLOW US**

instagram: [ethick\\_official](#)

facebook: [ethickofficial](#)

[ethick.pl](#)

Zdjęcia produktów mają charakter poglądowy. Niewielkie różnice w kolorze, strukturze lub wykończeniu wynikają z procesu produkcyjnego.  
Product images are for illustrative purposes only. Minor variations in colour, texture, or finish may occur as a result of the production process.  
Produktbilder dienen nur zur Veranschaulichung. Geringfügige Abweichungen in Farbe, Struktur oder Oberfläche können produktionsbedingt auftreten.

Wszystkie prawa zastrzeżone przez Prosperplast 1 Spółka z o.o., a zawartość nie może być powielana, pobierana, rozpowszechniana, publikowana lub przekazywana w jakiegokolwiek formie i w jakikolwiek sposób, bez uprzedniej pisemnej zgody Prosperplast 1 Spółka z o.o.  
Niniejszy katalog nie stanowi oferty w rozumieniu obowiązujących przepisów. Za błędy w druku nie odpowiadamy.

All rights are reserved by Prosperplast 1 Spółka z o.o. and content may not be reproduced, downloaded, disseminated, published, or transferred in any form or by any means, except with the prior written permission of Prosperplast 1 Spółka z o.o.  
This catalogue does not constitute an offer within the meaning of applicable rules. We are not responsible for printing errors.

## Contact us

### Poland

#### Headquarter, Production & Warehouse

Prosperplast 1 Sp. z o. o.  
Wilkowska 968  
43-378 Rybarzowice  
Poland

tel. +48 33 817 70 03  
fax +48 33 817 60 81

biuro@prosperplast.pl  
office@prosperplast.pl  
www.prosperplast.pl

### Germany

#### Headoffice

Prosperplast Deutschland GmbH  
Hopfenstraße 22a  
85283 Wolnzach  
Germany

tel. +49 8442 9628499  
fax +49 8442 9680853

kontakt@prosperplast.de  
www.prosperplast.de

### Czech Republic

#### Office & Warehouse

Prosperplast s.r.o.  
CTPark Tošanovice  
739 53 Horní Tošanovice  
Czech Republic

tel. +420 553 034 443  
mob +420 605 499 544

info@prosperplast.cz  
www.prosperplast.cz

### Hungary

#### Office

Prosperplast Kft.  
1136-H Budapest,  
Tátra u. 5/a, alagsor 2.  
Magyarország  
Hungary

mob +36 30 4095 710  
mob +36 30 2855 886

office@prosperplast.hu  
www.prosperplast.hu

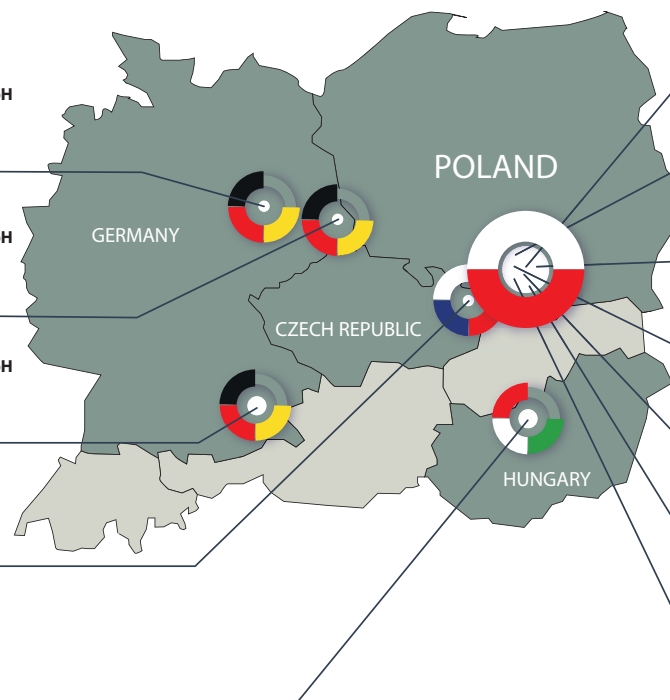
**Office & Warehouse**  
**Prosperplast Deutschland GmbH**  
Nikolaus-Otto-Straße 13  
02625 Bautzen  
Germany

**Warehouse**  
**Prosperplast Deutschland GmbH**  
Weststrasse 6  
02708 Löbau  
Germany

**Headoffice**  
**Prosperplast Deutschland GmbH**  
Hopfenstraße 22a  
85283 Wolnzach  
Germany

**Office & Warehouse**  
**Prosperplast s.r.o.**  
CTPark Tošanovice  
739 53 Horní Tošanovice  
Czech Republic

**Office**  
**Prosperplast Kft.**  
1136-H Budapest,  
Tátra u. 5/a, alagsor 2.  
Magyarország  
Hungary



**Headquarter, Production & Warehouse**  
**Prosperplast 1 Sp. z o. o.**  
Wilkowska 968  
43-378 Rybarzowice, Poland

**Warehouse & Production**  
**Prosperplast 1 Sp. z o. o.**  
E. Kwiatkowskiego 15, 17  
43-365 Wilkowice, Poland

**Warehouse**  
**Prosperplast 1 Sp. z o. o.**  
E. Kwiatkowskiego 18, 23  
43-365 Wilkowice, Poland

**Warehouse**  
**Prosperplast 1 Sp. z o. o.**  
Wilkowska 59, 61  
43-365 Wilkowice, Poland

**Warehouse**  
**Prosperplast 1 Sp. z o. o.**  
Wilkowska 12,14  
43-378 Rybarzowice, Poland

**Production & Warehouse**  
**Prosperplast 1 Sp. z o. o.**  
Leśnianka 81  
34-300 Żywiec, Poland

**Production**  
**Prosperplast 1 Sp. z o. o.**  
Wczasowa 733A  
43-374 Buczkowice, Poland



# ETHICK

[ethick.pl](http://ethick.pl)

Prosperplast 1 Sp. z o.o.  
Wilkowska 968  
43-378 Rybarzowice  
Poland

Feel free to place your order via B2B